



VMS 101

Introduction to VMS

Abstract

In this document we will cover the basic needs of vms and how to use the vms platform

JEREMY BORON
Intralogic Solutions

TABLE OF CONTENTS

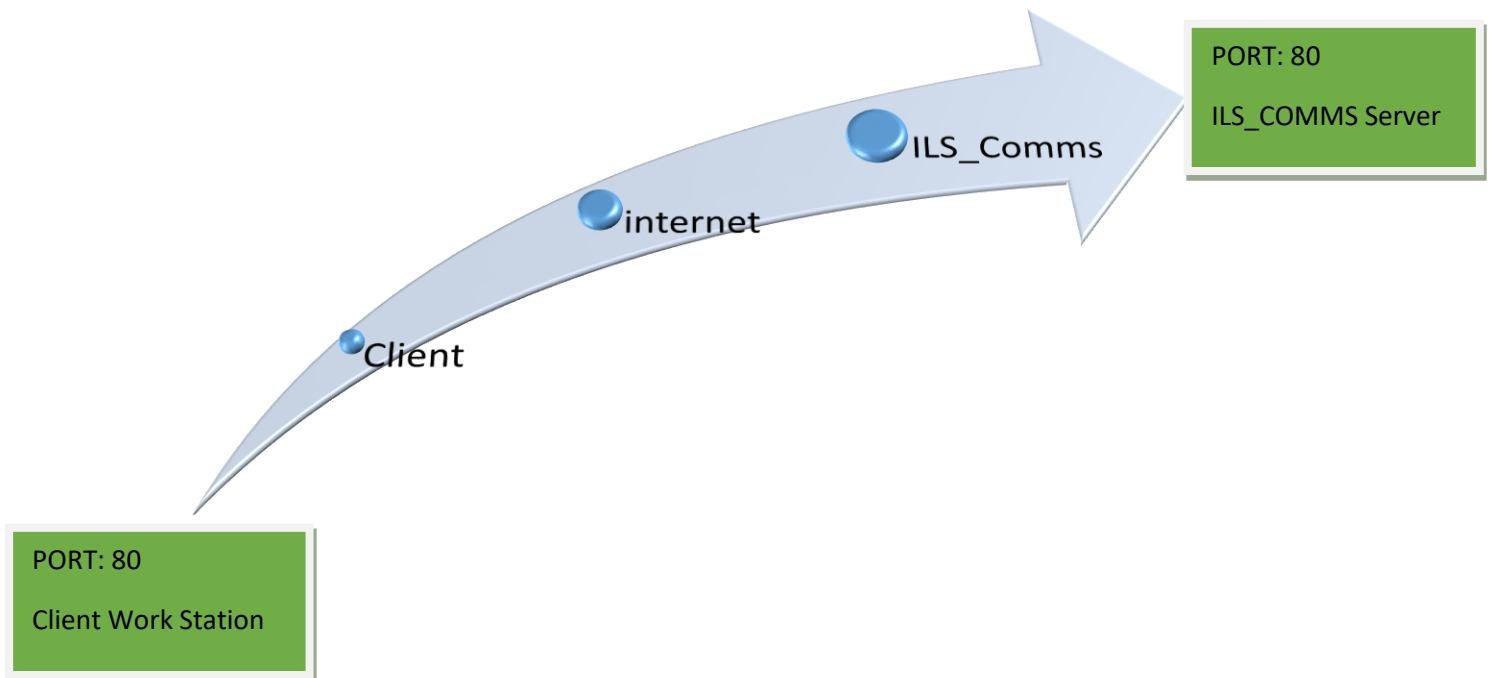
System Requirements	
User Work Station	2
Networking	3-4
How To Use VMS	
Start & Login	5
Main Navigation and Dashboard	6
How to load a camera	7
How To load a Emap	8
Using Emap Assets	9-10
Support & Help	
Emergency	11
Support	11
Contact	11

System Requirements

Processor:	i3 Intel / AMD Phenom II or Equivalent
Video Card:	GeForce NVidia GT 640 or Equivalent
System Memory:	4 GB OF Ram
System Architecture:	64bit
Space Requirement:	110 MB for the base installation



Vms is requires to establish a connection to ilscomms.ilsny.com over port 80 to authenticate and download all settings. This connection is also used to see if there are any updates needed. Once this connection is done the software runs standalone making connections from the client to the local dvr server directly

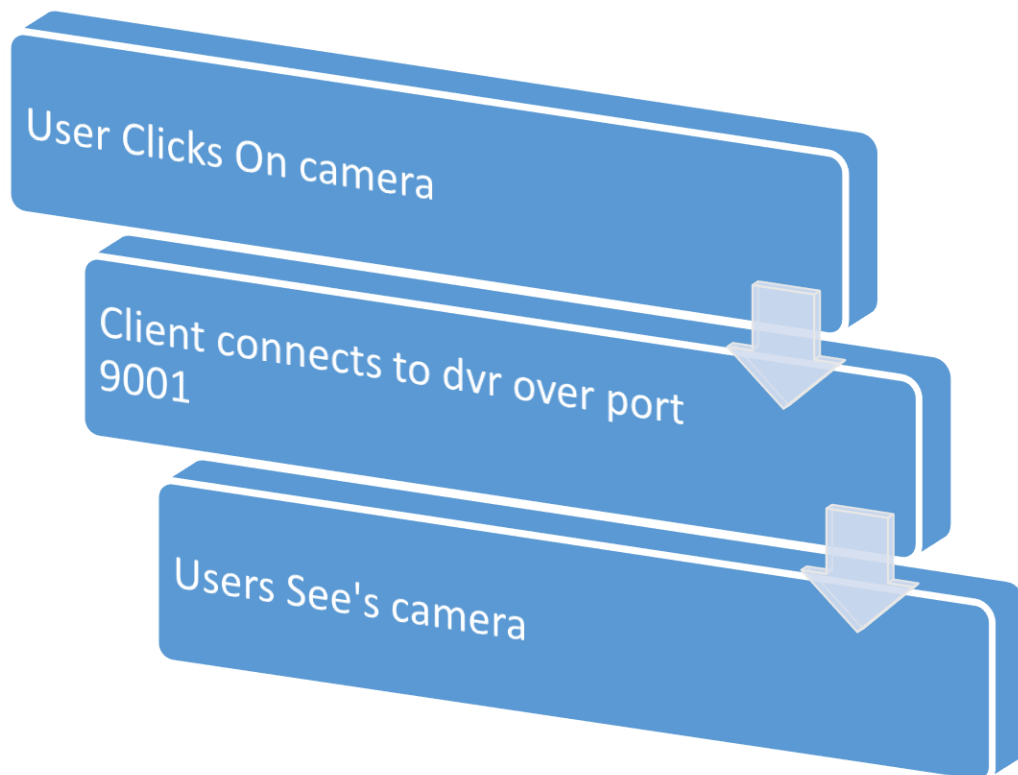


- For vms this is the only connection that happens outside of the network for a Client

Client Connections

When the software goes to open video or using io devices a connection is made from the client to the dvr

These connections usually are setup in the 9000 port range but can vary depending on client needs



How to start & login to Vms

*On your Desktop or Start menu
Find the Intralogic solutions icon
and double click it this will bring
you straight to the login screen*



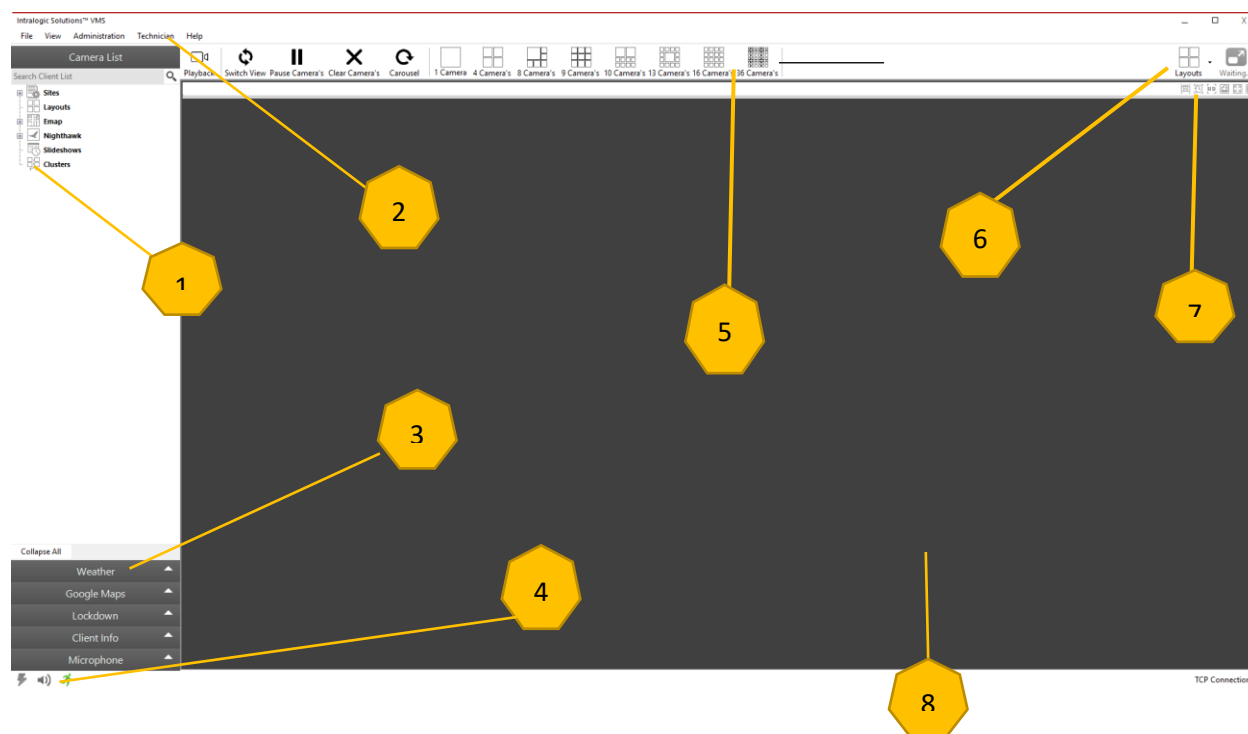
The program will load and display the login screen



*Once the program has loaded
you can fill in your username
and password and click login

This will bring you to the main
dashboard*

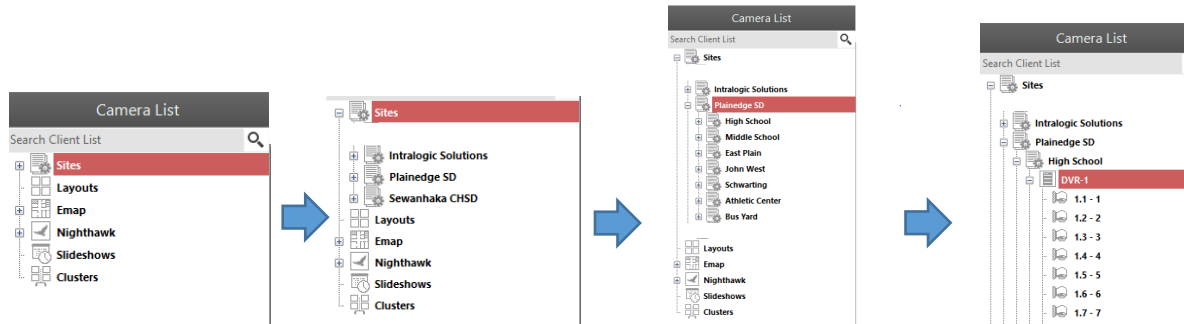
Main Navigation Dashboard of VMS



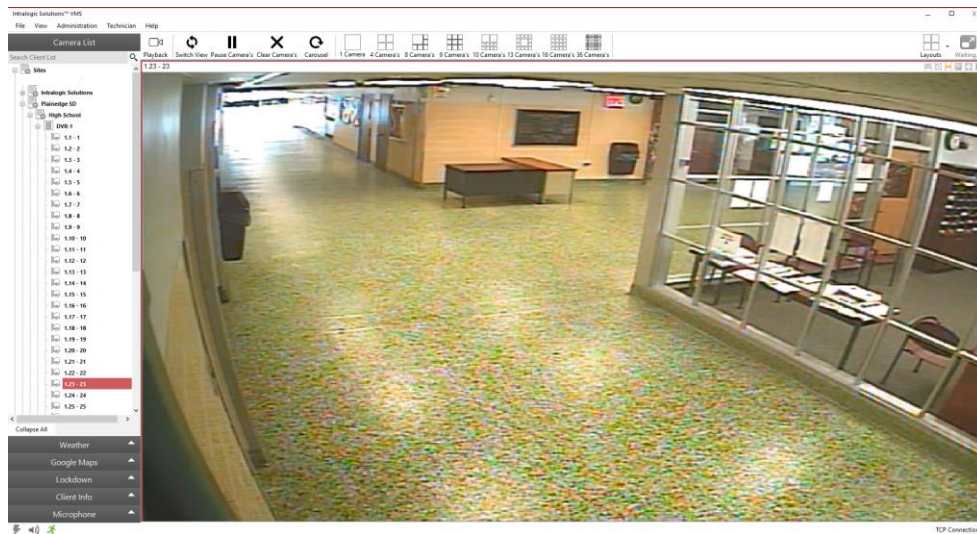
1	Number 1 is a drop down of all the assets you have access to you can drill down by double clicking this will make the data appear in figure 8 (Main Display Window)	
2	Number 2 is the main menu of the program it will display all the options you have access to and allow you to access them	
3	Number 3 is the widgets menu this menu shows all of the assets plotted over google maps, lockdown control if you have access, client info and any audio servers that may be configured	
4	Number 4 <ul style="list-style-type: none"> • Lightning = Quick Toggle allows you to click on a camera and load without drag drop • Toggles text to speech for single camera window • Motion Toggle for emap (toggles motion on emap) 	
5	Number 5 Primary Dynamic toolbar this tool bar changes when you use different items , camera view , Multiview,hypercluster,emap	
6	Number 6 allows you to quickly access any saved camera layouts you have in the system	
7	<ul style="list-style-type: none"> • Snapshot • Quick Playback • Auto hi quality 	<ul style="list-style-type: none"> • View static image • Full screen • Pause play
8	Main view window this view changes upon user interaction of the system	

How To Load A Camera

To load a camera you will have to drill down on the left menu by double clicking until you get to dvr and see the camera numbers

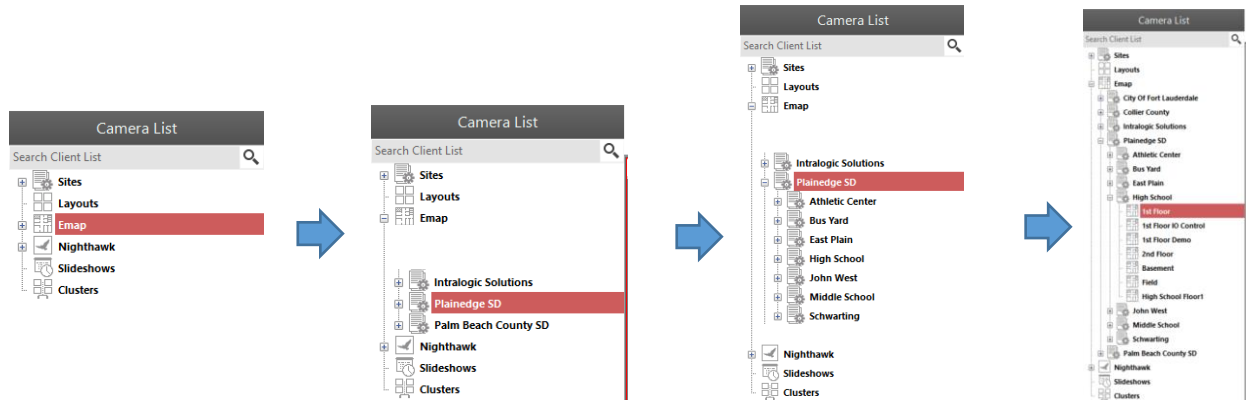


Once you get to the dvr level you can either double click or drag and drop the camera into the main view window. This will make the camera load and display video

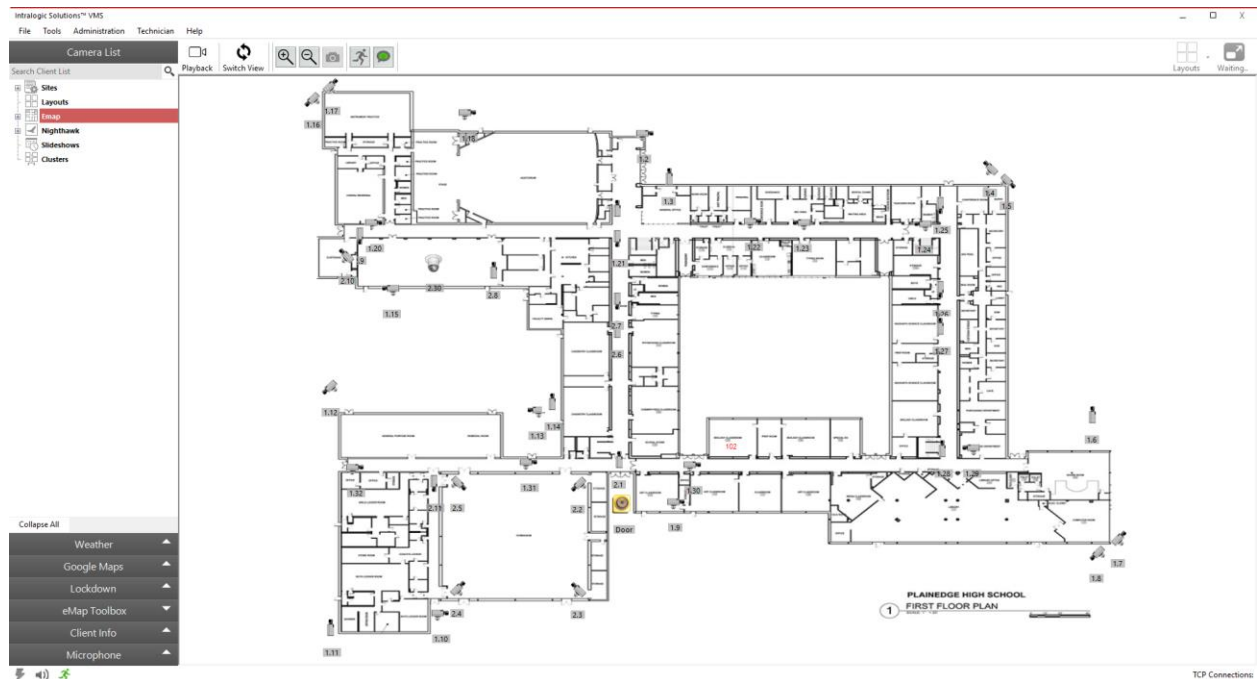


How To Load A Emap

To load a emap you will have to drill down on the left menu by double clicking until you get to the site and see all of the floor plans available



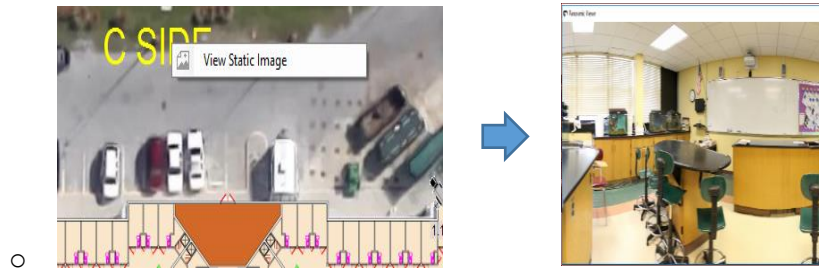
Once you get to the emap level you can double click on the. This will make the emap load and display all of its assets in the main view window



Any and all options can be tied to a asset that is plotted on a emap

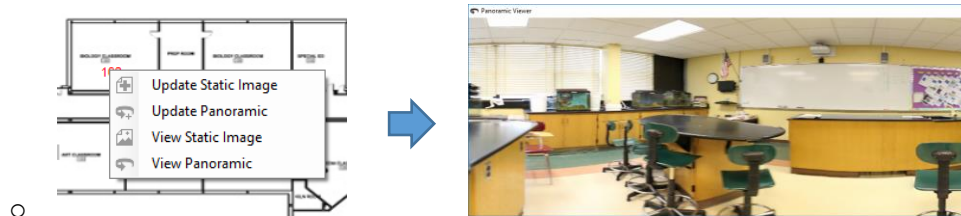
- Show Static image

- When a static image is attached to an assent you can view it by right clicking and clicking view static image



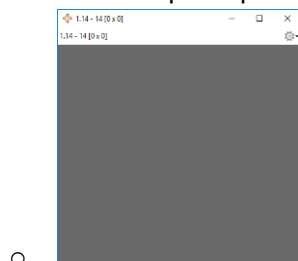
- Show Panoramic image

- When a Panoramic image is attached to an assent you can view it by right clicking and clicking view Panoramic image



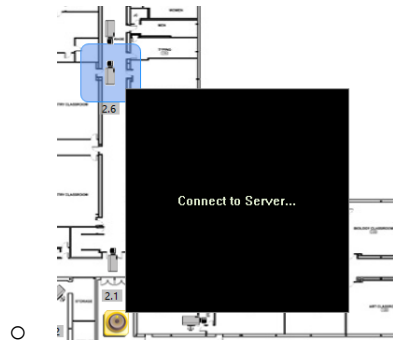
- Pop up camera

- To access a camera pop on you have to left click on a camera icon this will bring the camera up in a preview window with title header and other info



- Preview Camera (Camera Hover)

- To preview a camera a user have to simply hover over the icon this will connect and show video until user moved off of the icon



- Goto (Move to link)

- When a goto is applied on a emap this allows you to move to different emaps .
 - The use for this is using goto to navigate to other maps on stair icons or a campus overview map



Emergency

Should you need emergency assistance outside normal business hours, please call the main line at 516-799-7061 and press 8 when prompted for the Emergency Support Mailbox. Please be aware that this option should only be used for true support related emergencies.



SUPPORT

The most efficient way to reach a Support Technician and get the fastest response is to use the below contact information. Both the extension below, and the provided email address, will reach out to all of our technicians to get you the first available team member.

☎ 516-799-7061 ext. 604
✉ support@ilsny.com



CONTACT

IntraLogic Solutions Inc.
504 Hicksville Rd Massapequa, NY 11758

☎ (516) 799-7061
📠 (516) 799-7884
✉ info@intralogicsolutions.com
🌐 <http://www.ilsny.com>