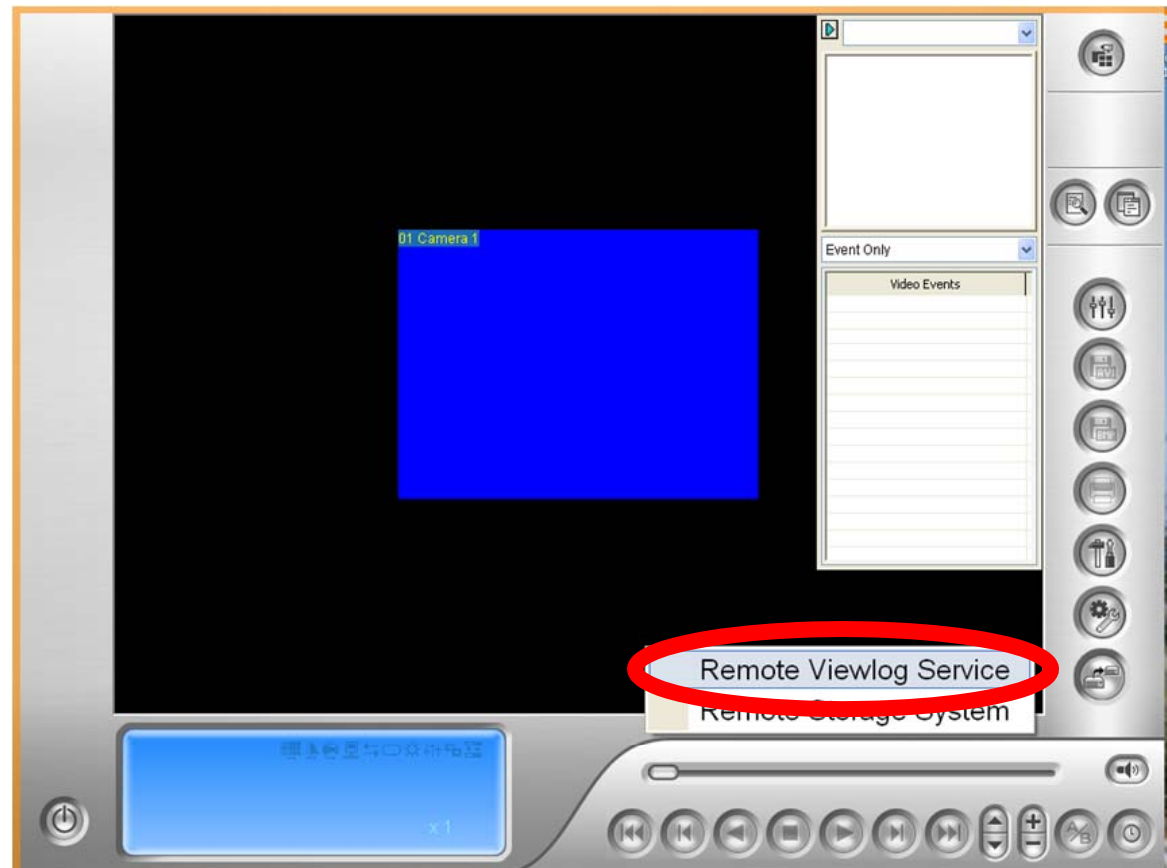




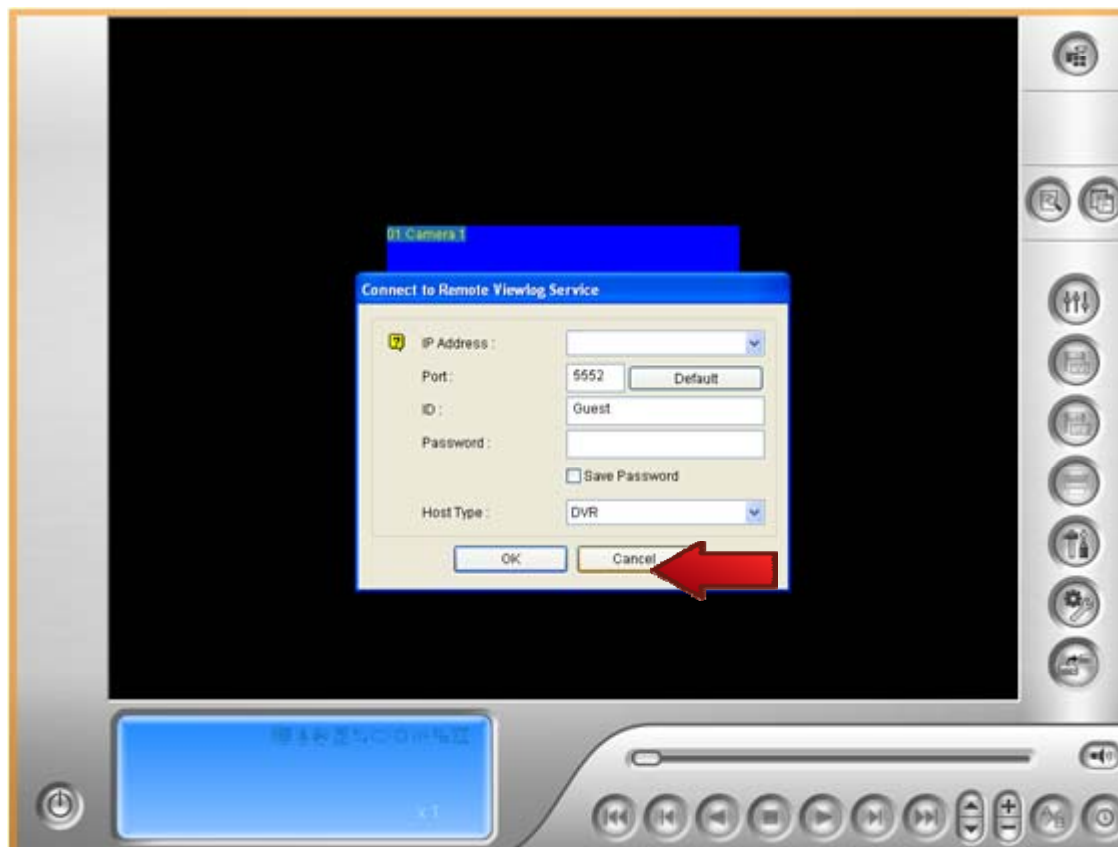
# Remote Playback Guide

# Starting ILS Playback

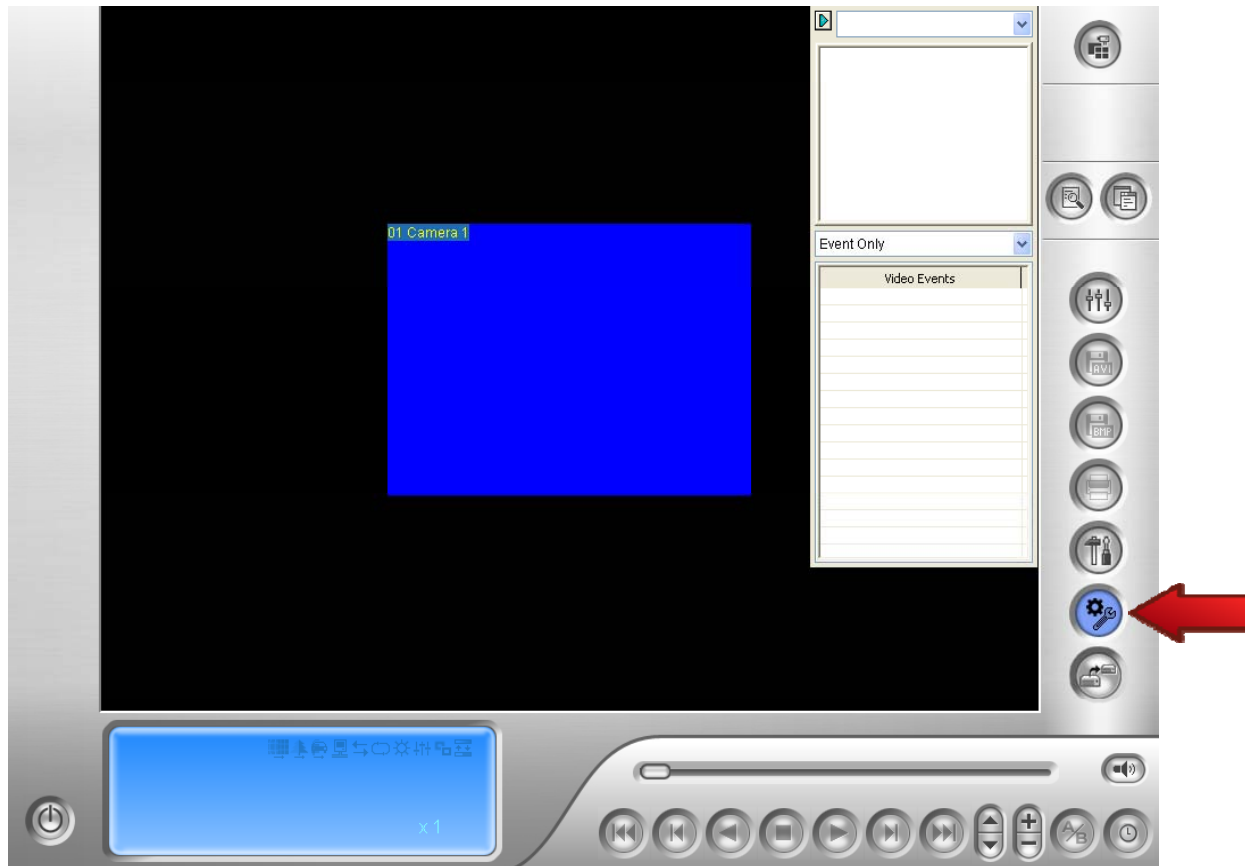
- Click on the ILS Playback Icon on the desktop
- When the first screen pops up, click on **REMOTE VIEWLOG SERVICE**



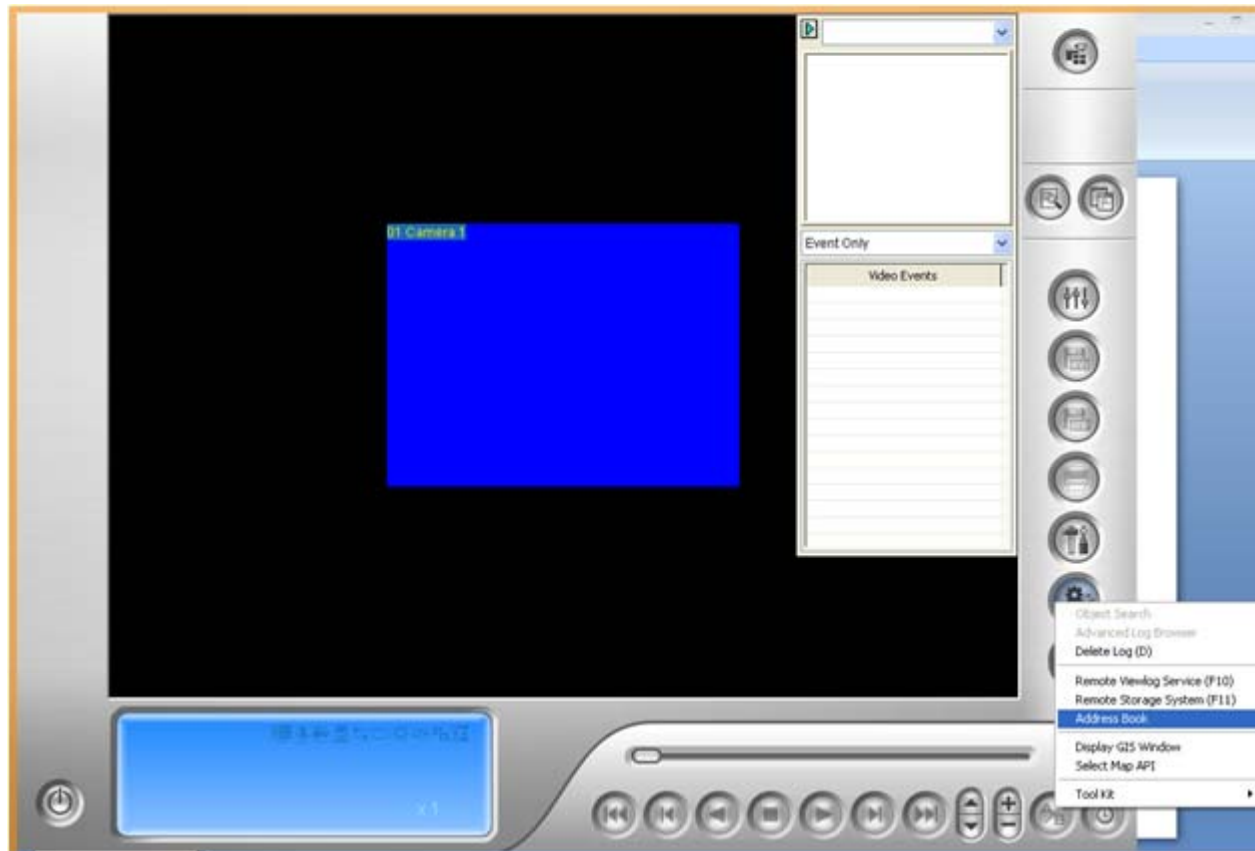
# Hit the Cancel Button



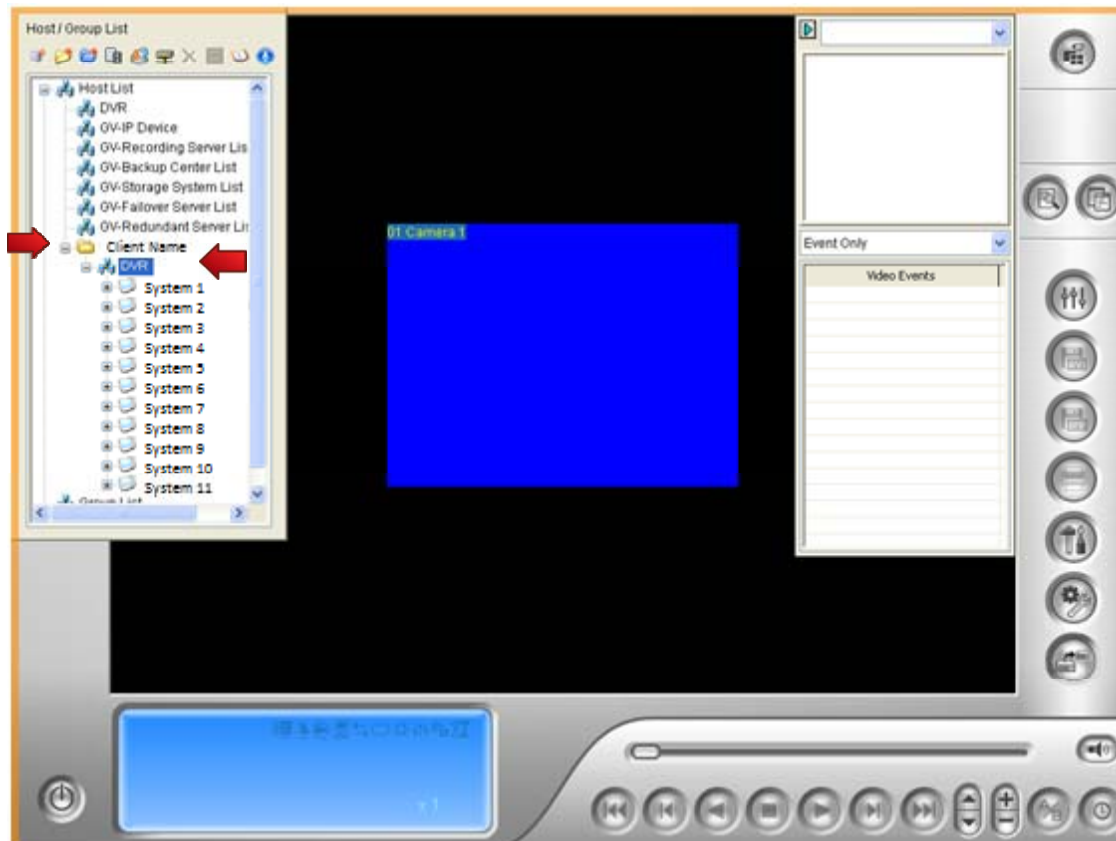
# Click the Wrench Button



# Select ADDRESS BOOK



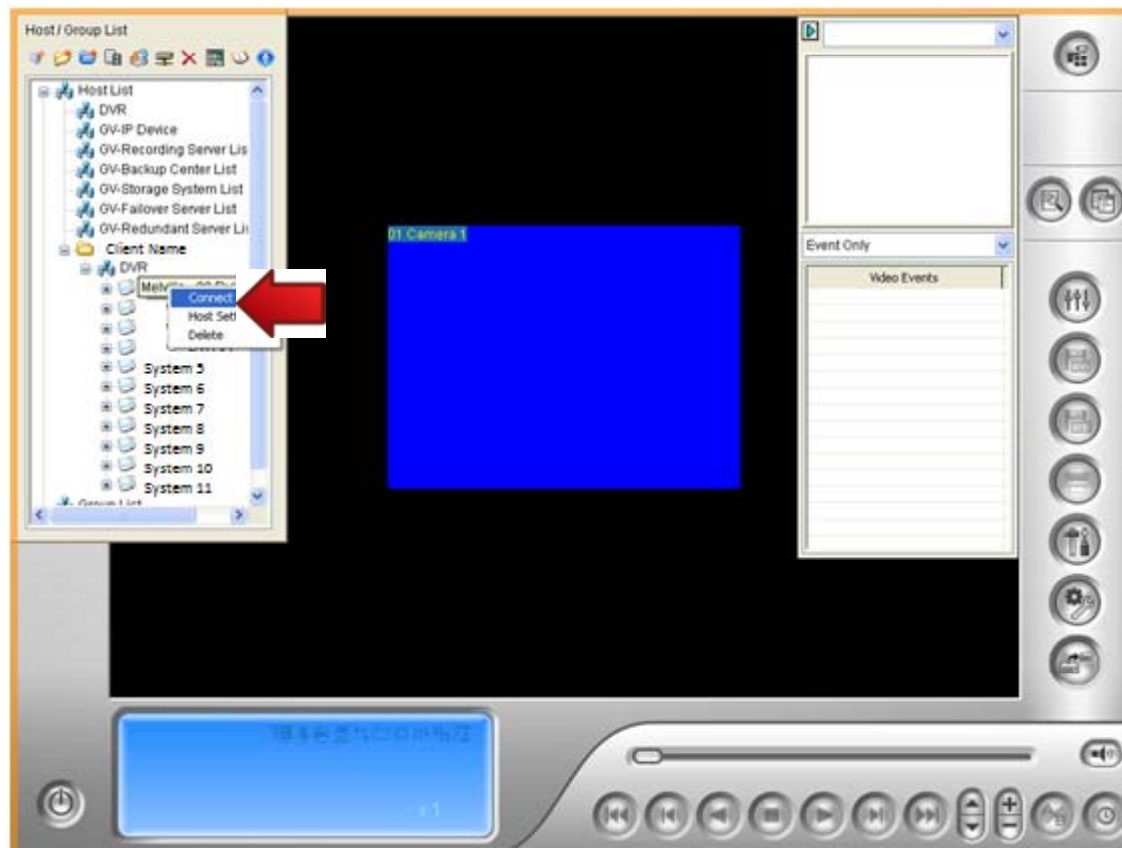
# Then Click where the red arrows indicate



**Click:**

- Company Name
- DVR

# Right Click the DVR you want to view, then select CONNECT



# Reviewing After the Fact

- **How to review footage previously recorded**
- *1<sup>st</sup>*- Select the **CAMERA** you want to review
- *2<sup>nd</sup>*-Select the **DATE** you want to review
- *3<sup>rd</sup>*- Select the **TIME** (military time) you want to review



# Reviewing After the Fact

The screenshot displays the Intralogic Solutions DVR software interface. On the left, a 'Host / Group List' pane shows a tree structure with 'DVR' expanded, listing 'System 1' through 'System 11'. A red bracket labeled 'Select DVR' points to this list. The central area shows a live video feed of a parking lot with several cars. On the right, a 'Camera 1 -' pane includes a calendar for March, April, May, and June, with a red bracket labeled 'Select Date' pointing to it. Below the calendar is an 'Event Only' pane showing a list of 'Video Events' with timestamps, with a red bracket labeled 'Select Time' pointing to it. At the bottom, a blue status bar displays the date '7/31/2012' and the time '14:39:55.593'. A row of playback controls (stop, previous, play, next, fast forward, etc.) is located at the bottom right.

Select DVR

Select Date

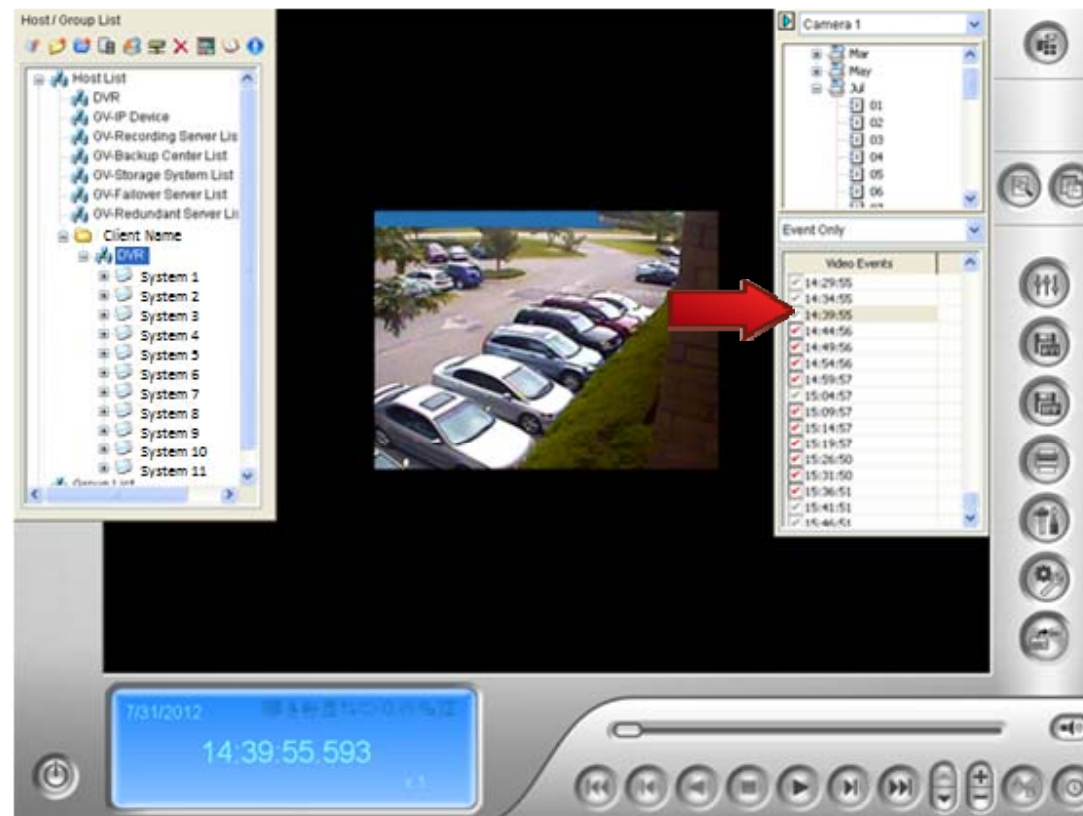
Select Time

# While Reviewing...

- **YOU WILL ONLY SEE FOOTAGE FROM WHEN **MOTION** WAS **DETECTED****
  - While looking through times, there might be time gaps
  - Clips will not be more than *FIVE* minutes long

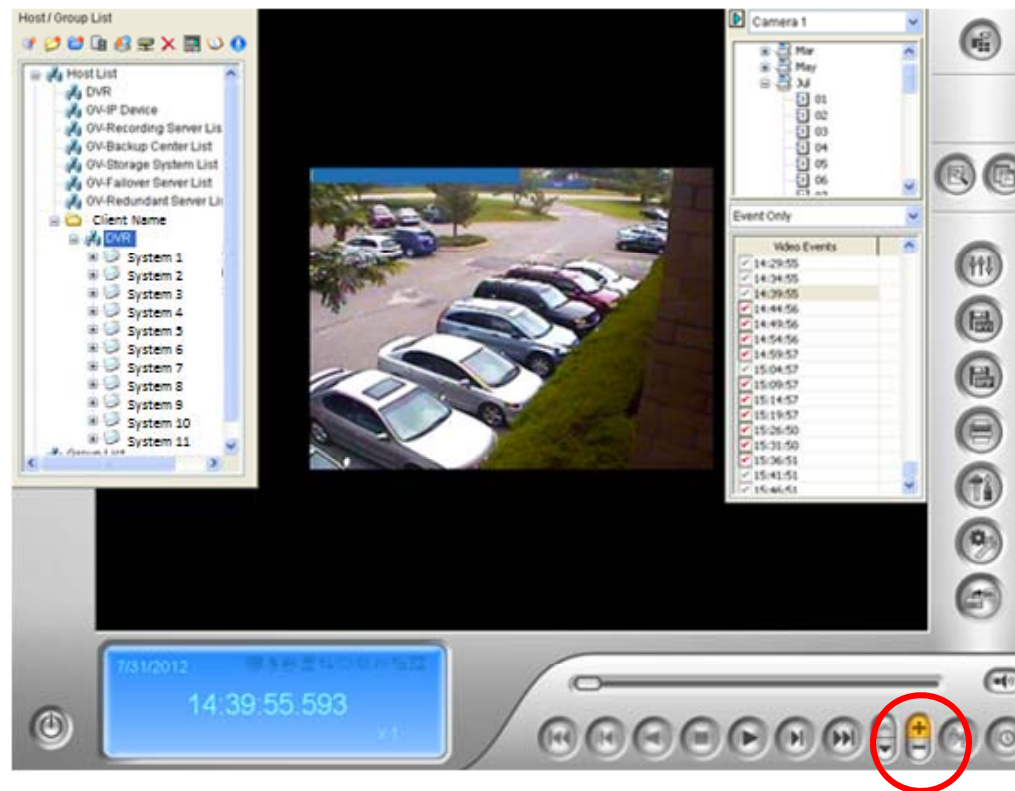
# While Reviewing...

- The check mark boxes on the side of each piece of footage- each has a checkmark box
  - If check is **RED**- Footage was **NOT VIEWED**
  - If check is **GREY**- Footage was **VIEWED**




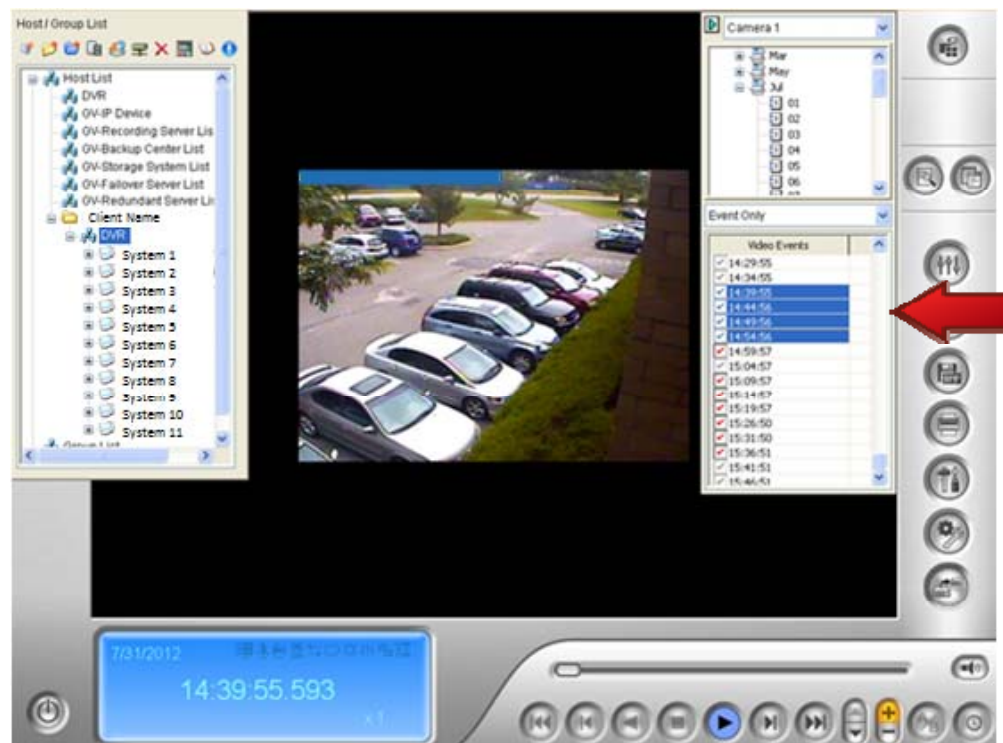
# While Reviewing...

- To **Zoom In** : Click “+” button on the bottom, then click on the video itself to *zoom in*
  - You may zoom in on any area that you *click on*



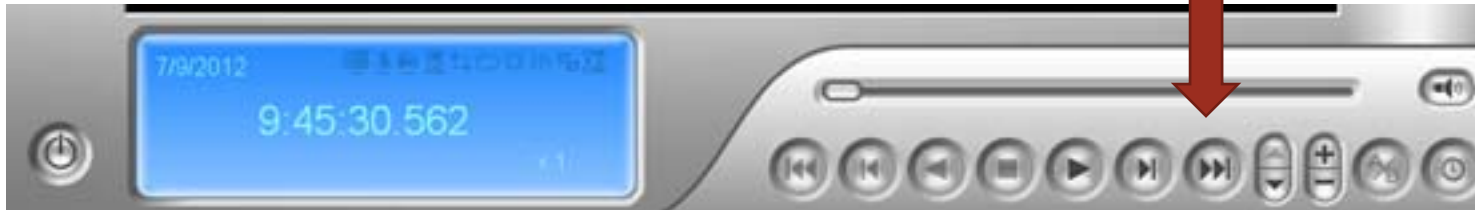
# While Reviewing..

- If you click the *start* time, hold  and click the *end time*. This will merge all the selected footage together to show continuously
  - This is good for Major events



# While Reviewing..

***Skip To-*** Use if you want to skip to the **Start or Finish**



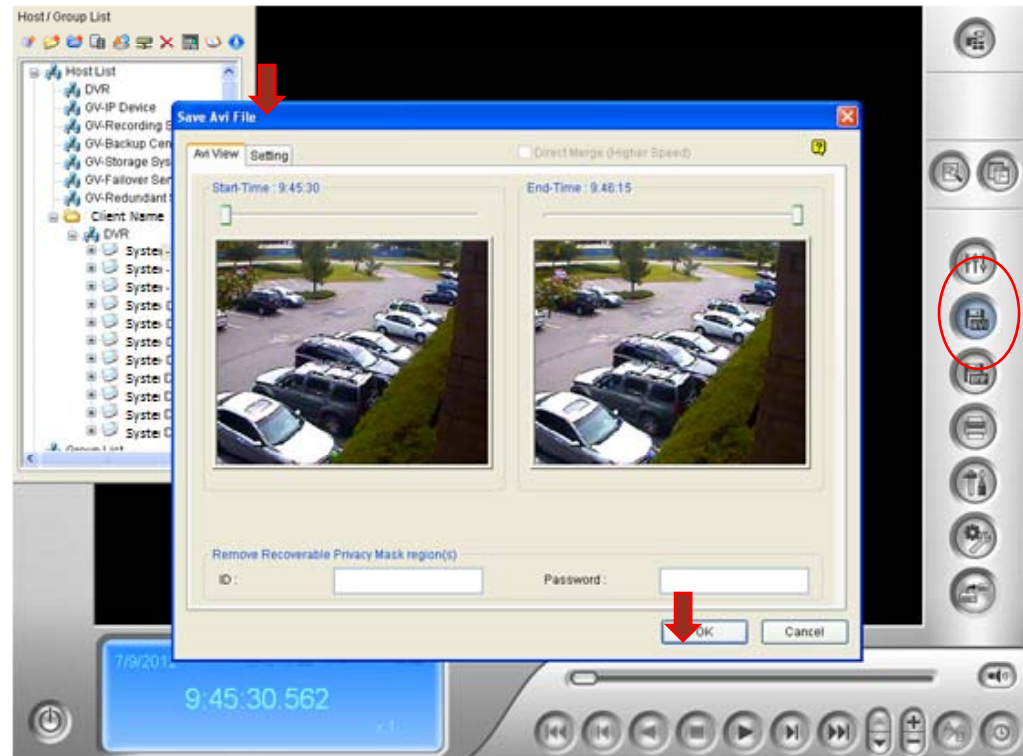
***Next Frame-*** Use if you have selected time to choose from

***Speed up or Speed down:*** How fast the video plays



# Saving

- When Saving with the code “Avi”
  - Click the save “Avi” button
- You can just crop the exact timeframe you want to save
- You Can click the “Setting” tab to choose where you want to save the clip.
- Then Click OK



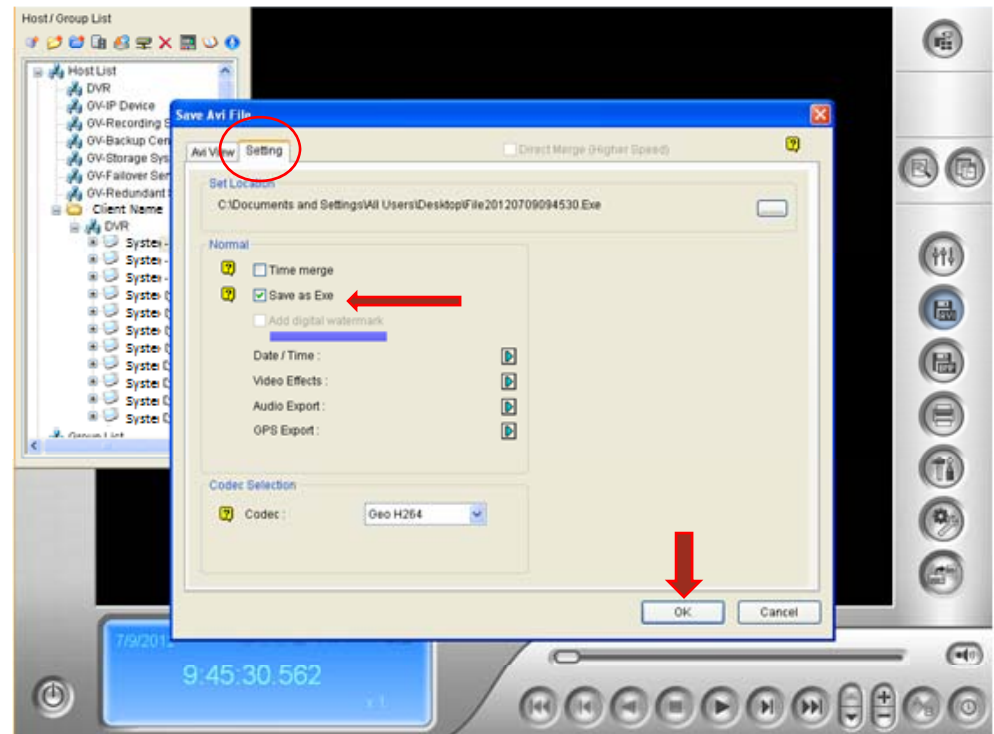
# Saving

- Saving with the code “**AVI**” basically means someone has this program and will be able to see what you are sending.
- If the person does not have this program you need to send it with the code “**EXE**”

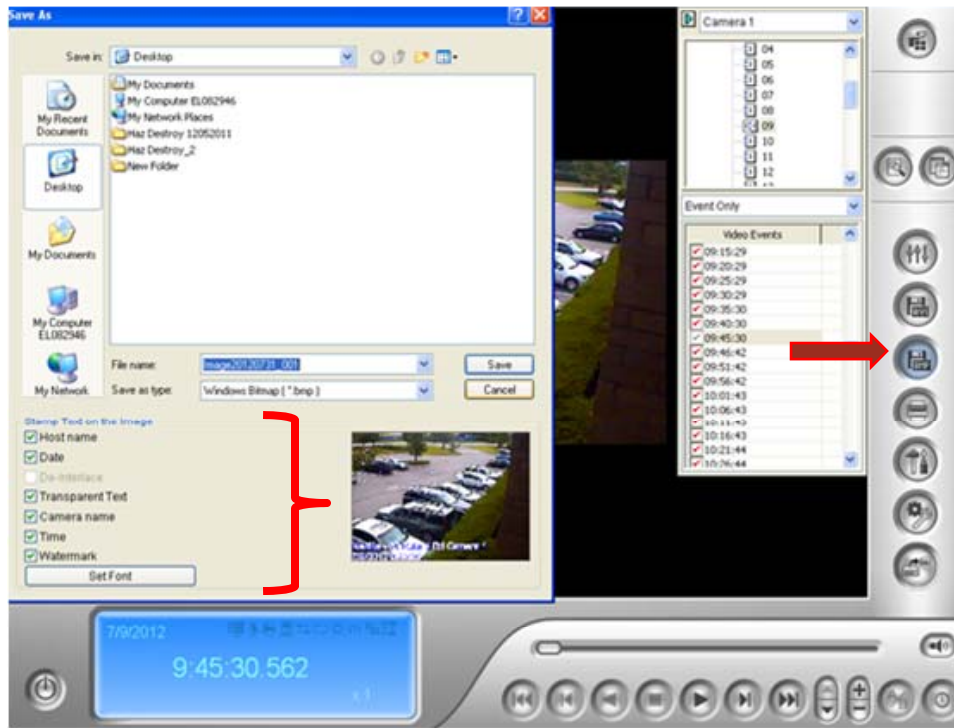


# Saving

- If you need to save the clip for someone who does **NOT** have this program, you need to save the file as **“EXE”**.
- You can find this feature in the **SETTING** tab when you saving under **AVI**
- Then Click OK



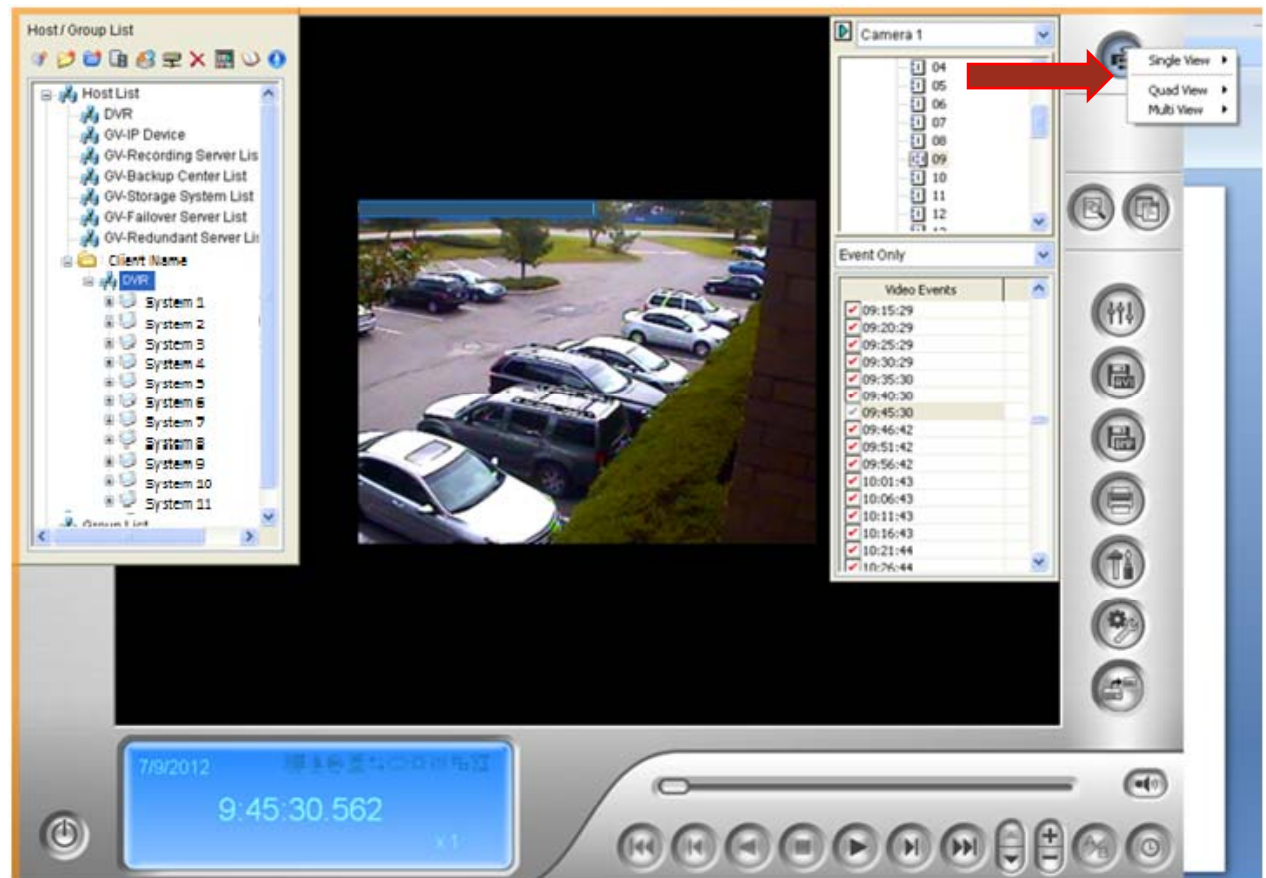
# Saving



- You Can Save A Still Image.
- Click the BMP button
- From there you can decide if you want things such as the followed stamped on the still image
  - Host Name
  - Date
  - Text
  - Camera Name
  - Time
  - Watermark

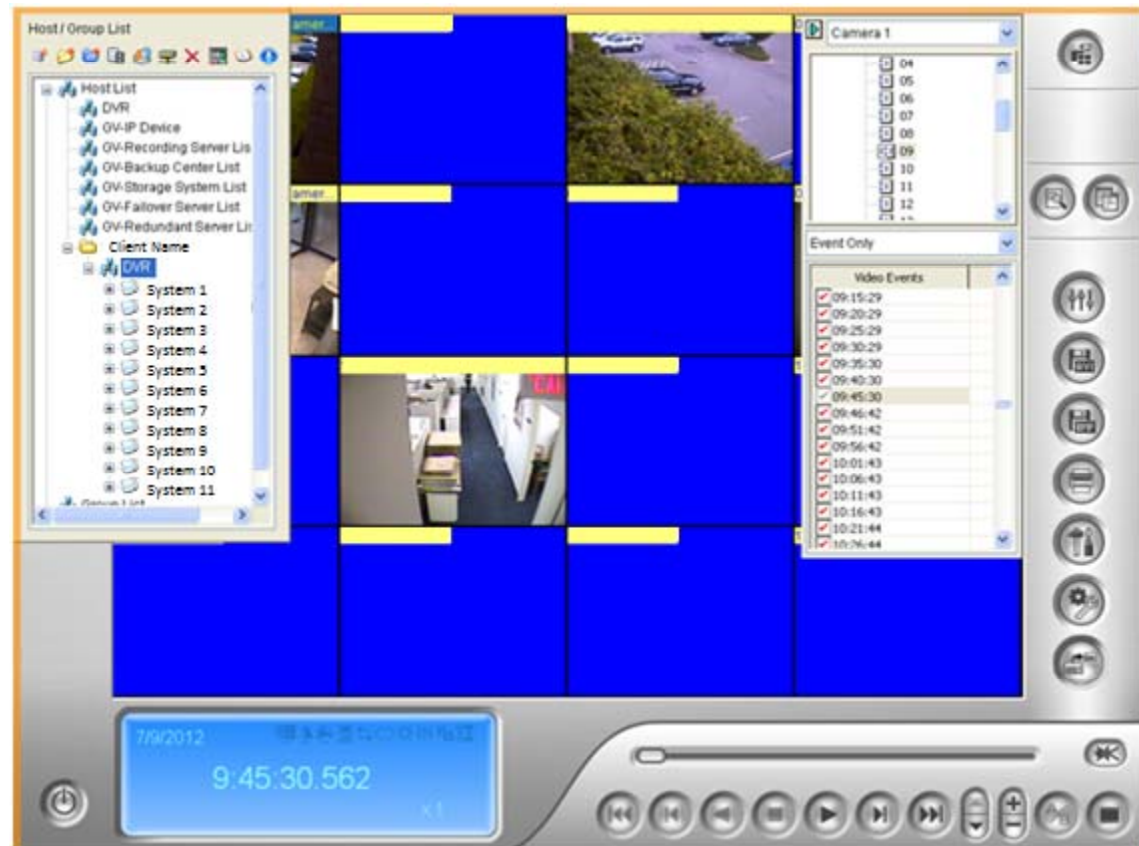
# Saving

- You can save still images with multiple views
- You Can pick the Cameras you want to save multiple images from.



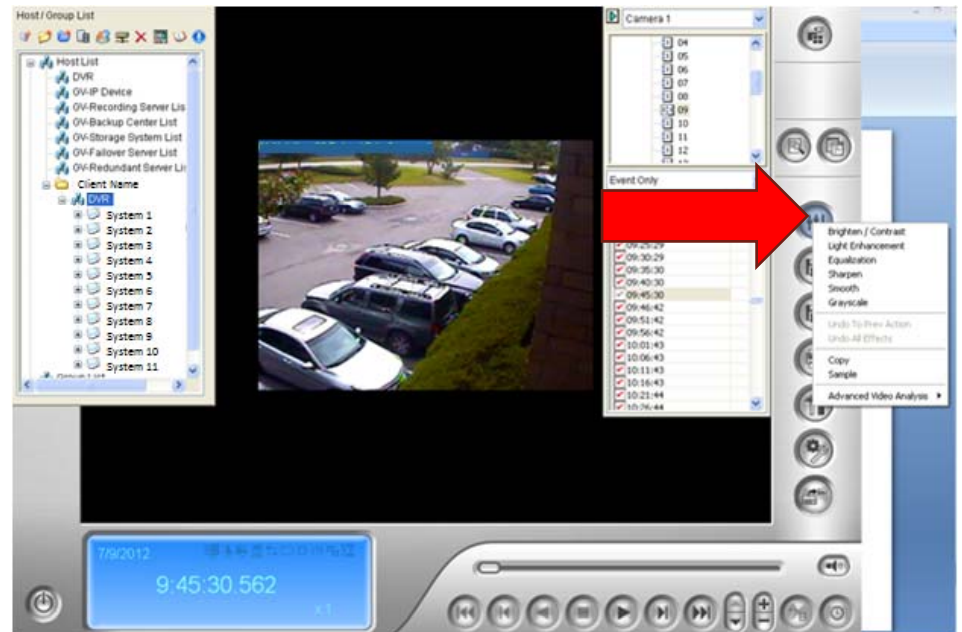
# Saving

- When you select the cameras you want use, **save it**.
- Go about saving the same way you would any other image.



# Effects

- Before saving you can go into **effects** for **either** a **VIDEO** or a **PICTURE** and change the effect
- Such As:
  - Brighten/ Contrast
  - Light Enhancement
  - Equalization
  - Sharpen
  - Smooth
  - Grayscale



**NOTE:** No matter what, you can not alter an original video. You can always go back to how it first was.

# Printing

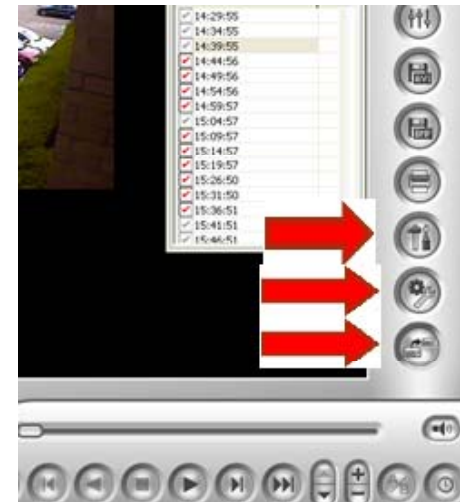
- To **Print** an Image, start off by clicking the **print** button
- There are different adjustments you can make in the printing feature
  - Make size of clip bigger or smaller
  - You can write a note to have printed out on the piece of paper
  - Add text stamp and Position





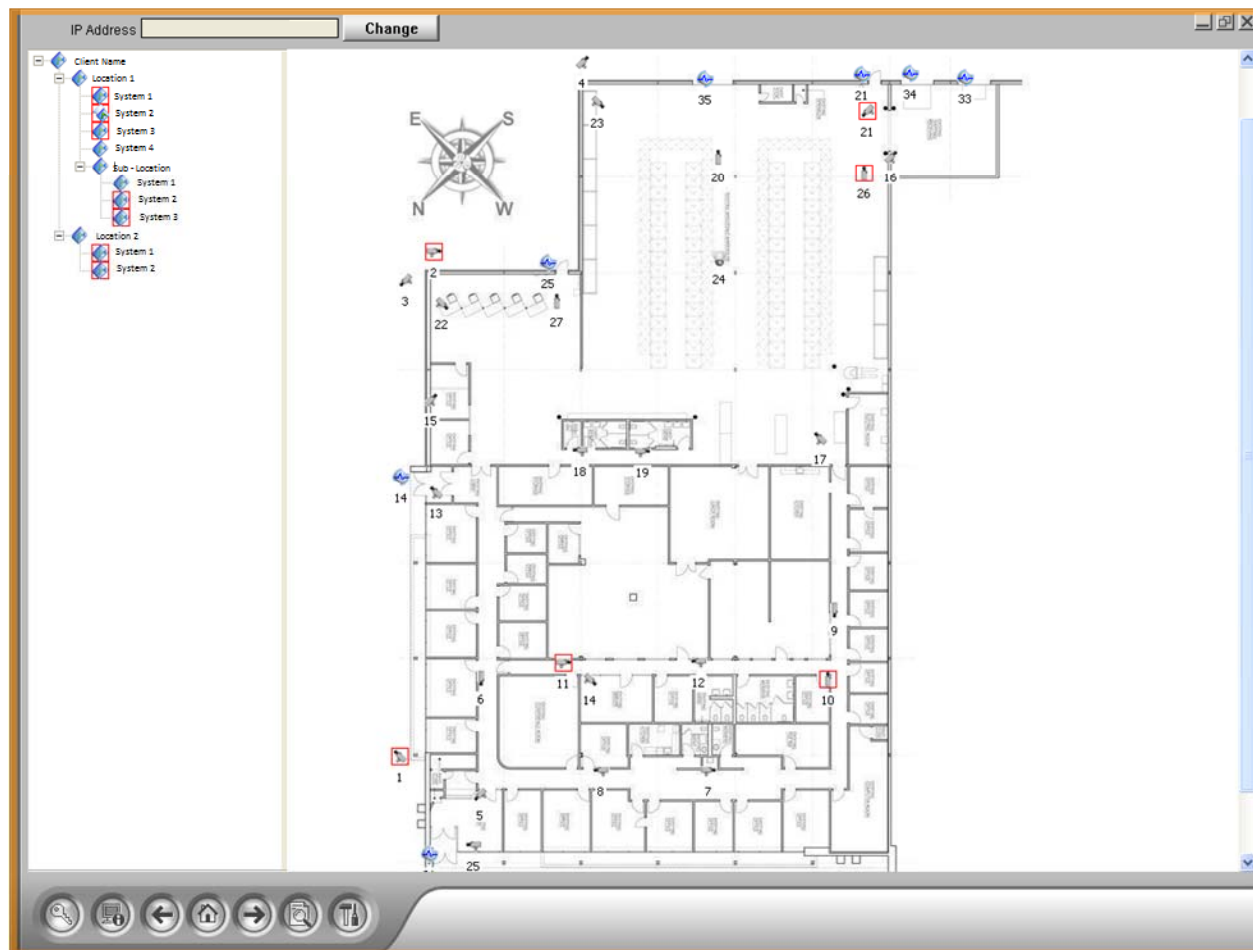
# Quick Tips

- IntraLogic can back up entire DVR if they have too, remotely
- If Police need to come in to review video- Call IntraLogic
- Don't touch the **THREE** buttons on the right side from the bottom. These deal with settings that are already set!



# Quick Tips: EMAP

- Flashing red square: Motion being detected.





# Never Delete Footage

- You Can lock footage that will never be deleted as well as unlock the same footage.
- After picking the video you want to “*lock*” *right click* on that footage.
- Click “ **MARK NEVER RECYCLE**”
- In the check box there will now be a **little lock**, NOT a check.
- You may lock *as many clips as you want*.



Thank you for your time!

IntraLogic Solutions  
504 Hicksville Rd  
Massapequa NY 11758

516-799-7061

[www.intralogsolutions.com](http://www.intralogsolutions.com)

[www.nyschoolsecurity.com](http://www.nyschoolsecurity.com)

